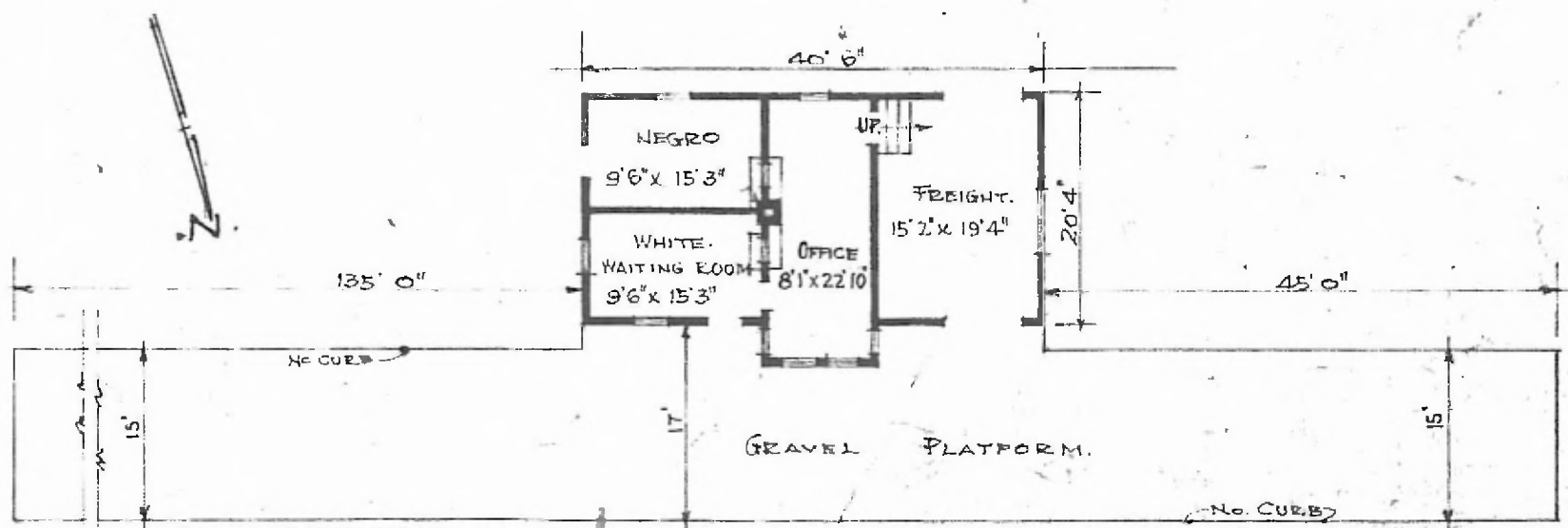


ERECTED. - 1910.
 TYPE. FRAME.
 FOUNDATION. PILE HEADS.
 WALLS. 2" X 6"
 ROOF { TYPE. HIP GABLE.
 PITCH. 1/3
 HEATING. STOVES.

FLOOR. 3/4 X 3 1/4" Y. PINE.
 FINISH { INSIDE. 3/4 X 3 1/4" Bd. CEILING.
 OUTSIDE. BOARD & BATT.
 CEILING HEIGHT. 12'0" FET. 10'4"
 LIGHTING. LAMPS.
 SANITARY FACILITIES. OUTSIDE TOILETS.



DIV. CENTRAL
 SUB. DIV. ARKINDA
 STA. NO. W 578

FLOOR PLAN
 SCALE. 1/16" = 1'0"

COMBINATION STATION AT
 SWINK OKLA.

JUNE 15 1915.