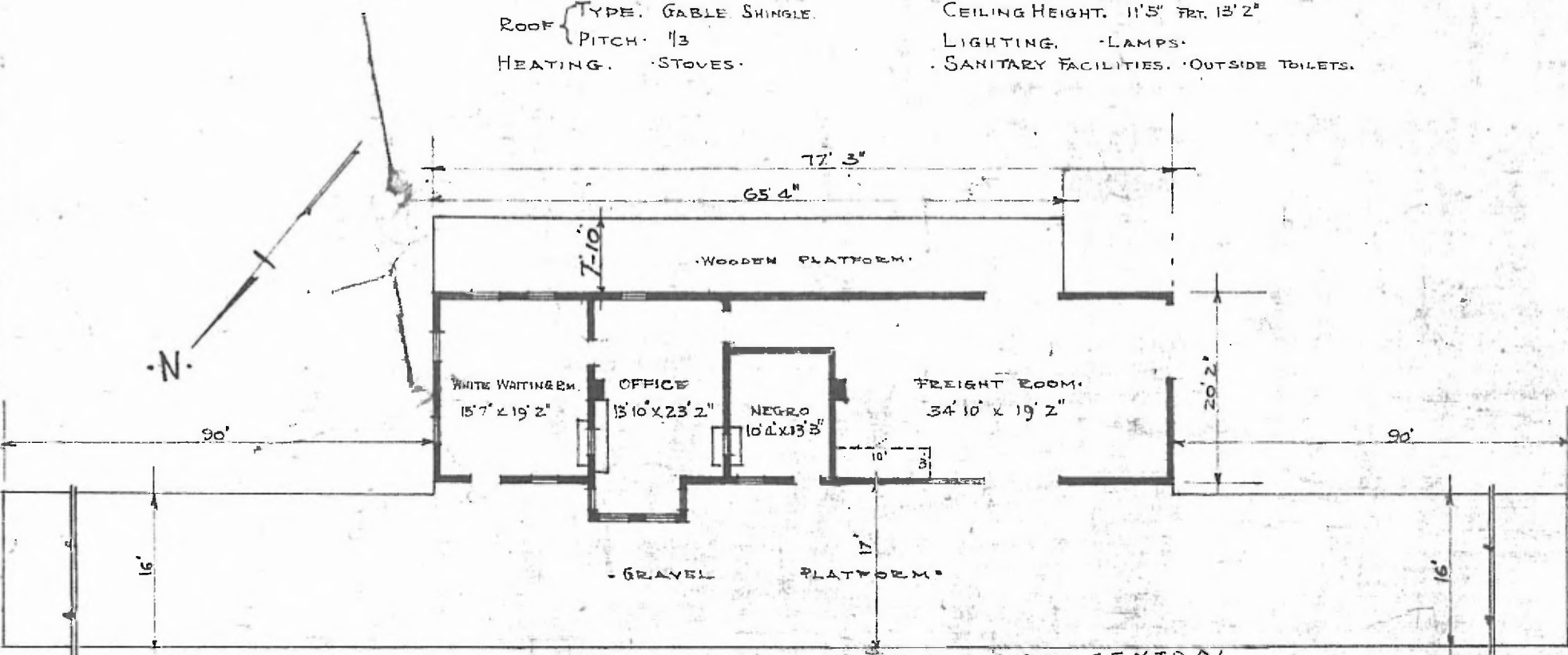


ERECTED. 1905.
 TYPE. FRAME.
 FOUNDATION. PILE HEADS.
 WALLS.
 ROOF { TYPE. GABLE SHINGLE.
 PITCH. 1/3
 HEATING. STOVES.

FLOOR. 3/4" x 3/4" Y. PINE.
 FINISH { INSIDE. 3/4" x 3/4" Bd. CEILING.
 OUTSIDE. 1" x 6" - 1" x 4" DECK SIDING.
 CEILING HEIGHT. 11'5" FR. 13'2"
 LIGHTING. LAMPS.
 SANITARY FACILITIES. OUTSIDE TOILETS.



FLOOR PLAN.
 SCALE 1/16" = 1'0"

DIV. CENTRAL
 SUB. DIV. ARTHUR
 STA. No. 484

COMBINATION STATION AT
 TALIHINA, OKLA.