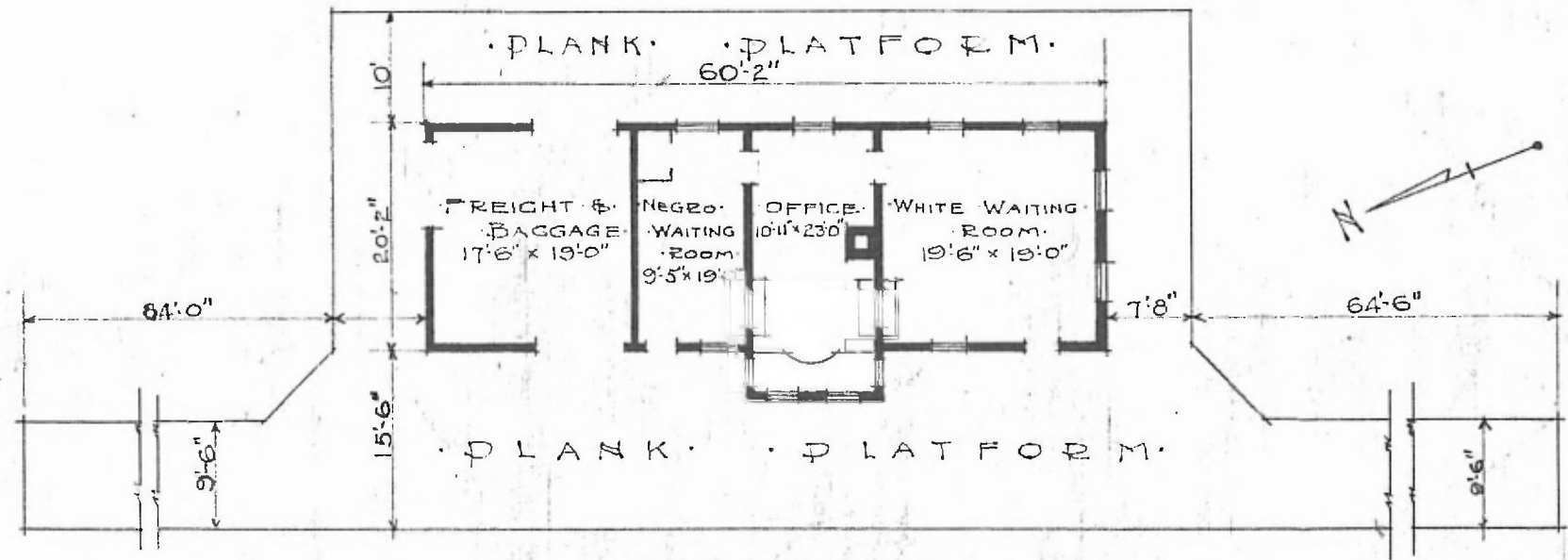


72

·ERECTED· 1901
 ·TYPE· FRAME
 ·FOUNDATION· PILE HEADS
 ·WALLS· 2" x 6"
 ·ROOF· { TYPE: GABLE, SHINGLES
 DITCH: 1/8
 ·HEATING· STOVES

·FLOOR· 3/4" x 3/4" Y.F.
 ·FINISH· { INSIDE· 3/4" x 3/4" M. & B.
 OUTSIDE·
 ·CEILING HEIGHT· 12' 1"
 ·LIGHTING· OIL LAMPS
 ·SANITARY FACILITIES· OUTSIDE TOILETS

DIV. SOUTH WESTERN
 SUB-DIV. CHICKASAW
 STA. NO. G-563



·FLOOR PLAN·
 SCALE 1/16" = 1' 0"

·COMBINATION STATION·
 ·TUTTLE OKLA·

OCT. 11, 1916.