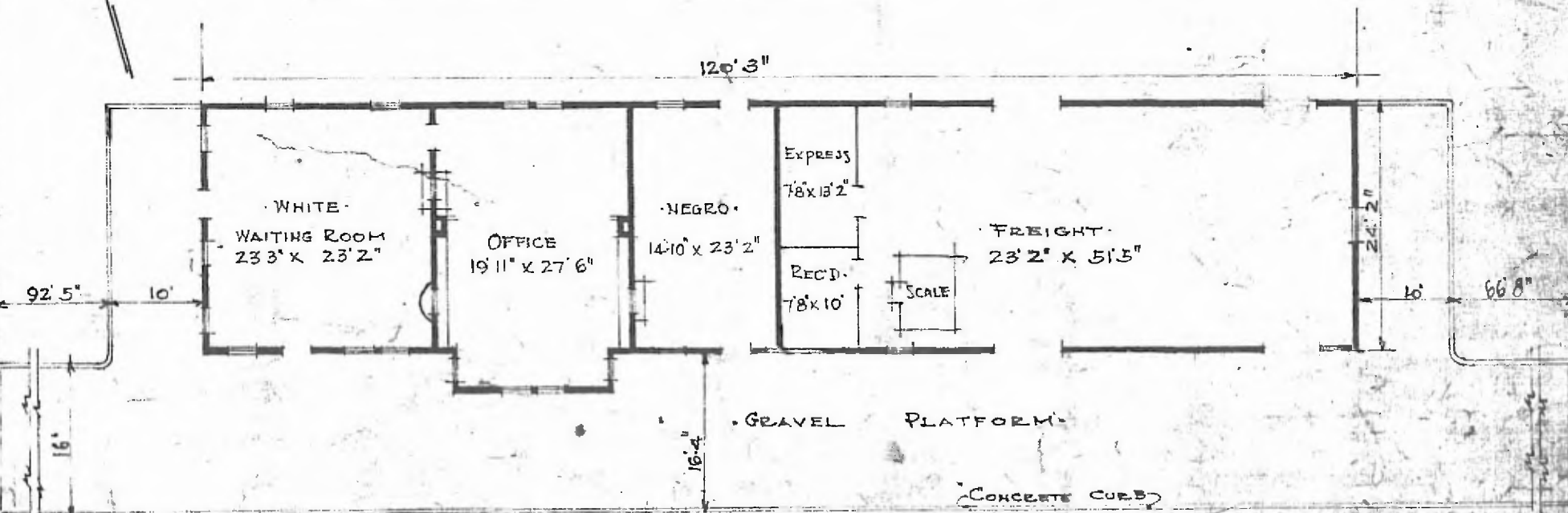


ERECTED. 1909 EXTD. 1912.  
 TYPE. FRAME.  
 FOUNDATION. PILE HEADS.  
 WALLS. 2" X 6"  
 ROOF { TYPE. HIP SHINGLES.  
 PITCH. 1/3  
 HEATING. STOVES.

FLOOR. 2 1/4" MAPLE. 3/4" X 3 1/4" Y PINE.  
 FINISH { INSIDE. V. JOINT CEILING.  
 OUTSIDE. BEVEL DROP SIDING.  
 CEILING HEIGHT. 11'5"  
 LIGHTING. ELECTRIC. 2 WIRE. 110. DC.  
 SANITARY FACILITIES. OUTSIDE TOILETS.



FLOOR PLAN.  
 SCALE. 1/16" = 1'0"

CONCRETE CURB  
 DIV. CENTRAL  
 SUB. DIV. ARKINDA  
 STA. NO. W 5

COMBINATION STATION AT  
 VALLIANT OKLA.