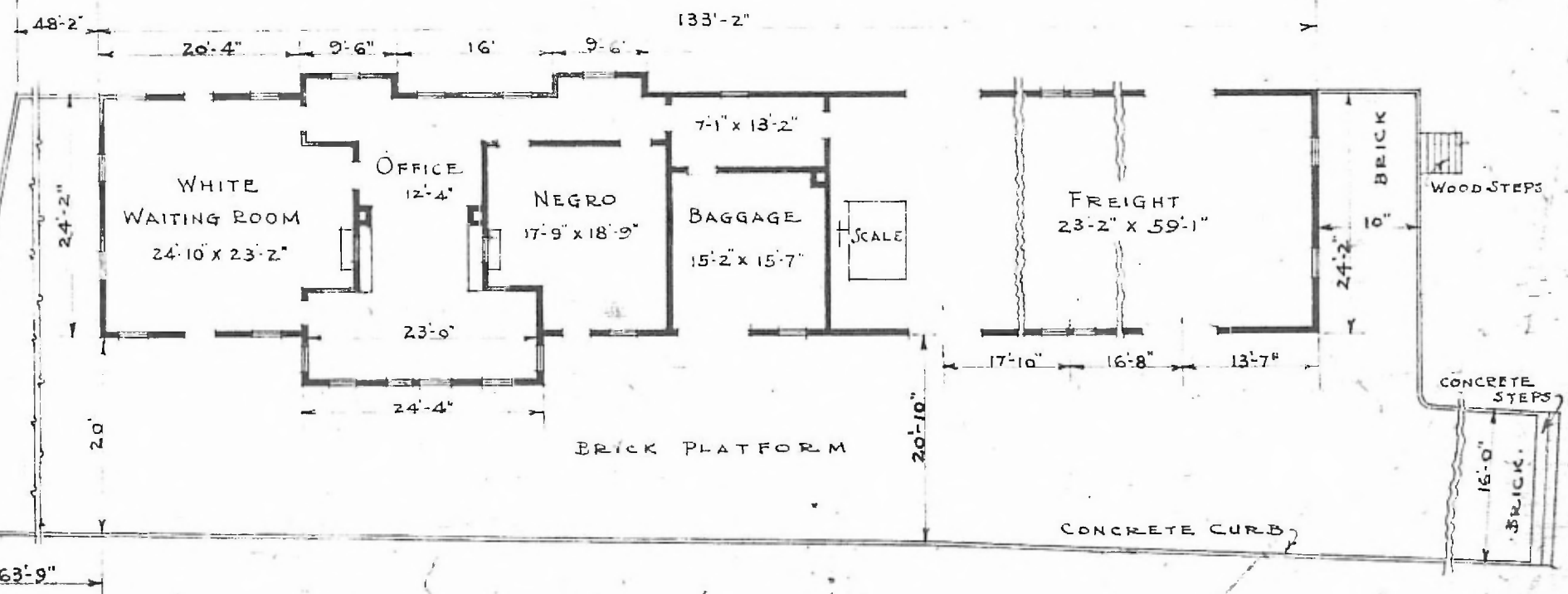


ERECTED 1913.
 TYPE FRAME
 FOUNDATION CONCRETE
 WALLS 2x6"
 ROOF { TYPE HIP-SHINGLES.
 PITCH 1/3
 HEATING STOVES

FLOOR 2 1/4" MAPLE.
 FINISH { INSIDE - 3/4" V. JOINT CEILING
 OUTSIDE - 1/2"x6" LAP SIDING
 CEILING HEIGHT 12'-2"
 LIGHTING ELECTRIC 2 WIRE 110-AC.
 SANITARY FACILITIES OUTSIDE TOILETS.



F. S. & W. R. R.



FLOOR PLAN.
 SCALE: 1/16" = 1'-0"

PASSENGER STATION AT
 WELEETKA JCT. OKLA.