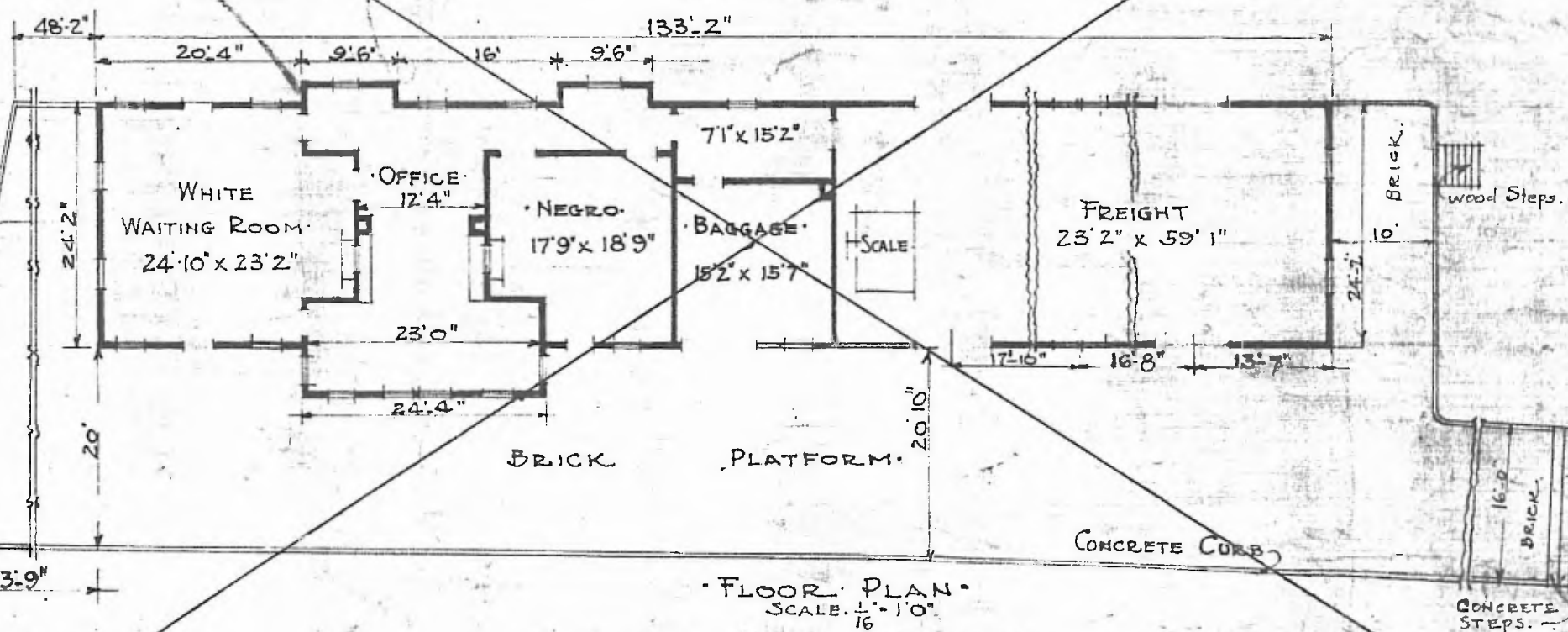


ERECTED: 1913.  
 TYPE: FRAME.  
 FOUNDATION: CONCRETE.  
 WALLS: 2"x6"  
 ROOF { TYPE: H.P. SHINGLES.  
 PITCH: 1/3  
 HEATING: STOVES.

FLOOR: 2 1/4" MAPLE.  
 FINISH { INSIDE: 3/4" V. JOINT CEILING.  
 OUTSIDE: 1/2" x 6" LAP SIDING.  
 CEILING HEIGHT: 12' 2"  
 LIGHTING: ELECTRIC 2 WIRE 110 A.C.  
 SANITARY FACILITIES: OUTSIDE TOILETS.

C. & F. S. & W. R. R.



• FLOOR PLAN •  
 SCALE: 1/16" = 1' 0"  
 VOID

• COMBINATION STATION AT •  
 • WEELETKA, OKLA. •

• SEPT. 25, 1915 •