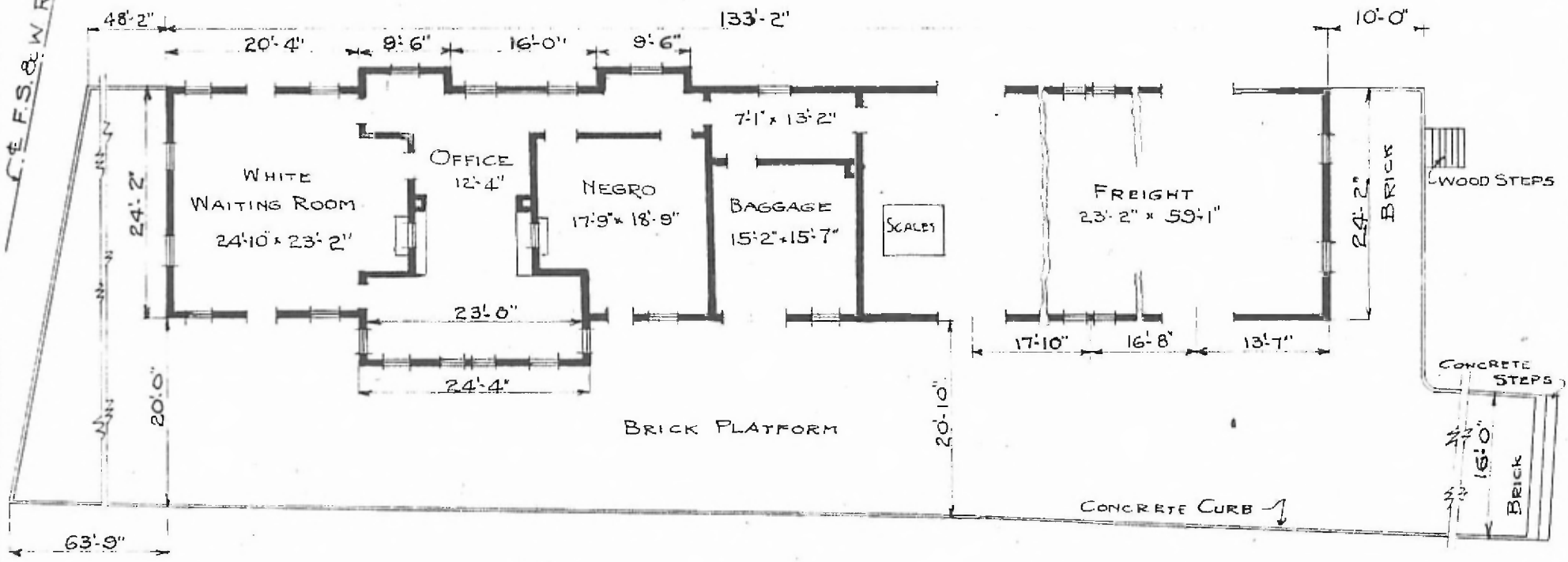


ERECTED: 1913.
 TYPE FRAME
 FOUNDATION: CONCRETE
 WALLS 2" x 6"
 ROOF { TYPE HIP SHINGLES
 PITCH 3/4
 HEATING STOVES

FLOOR 2 1/4" MAPLE.
 (INSIDE 3/4" V. JOINT CEILING)
 FINISH { OUTSIDE 1/2" x 6" LAP SIDING
 CEILING HEIGHT 12' 2"
 LIGHTING ELECTRIC - 2 WIRE - 110 A.C.
 * SANITARY FACILITIES - OUTSIDE TOILETS

SW DIV
 Creek Side
 E 495

C. & F. S. & W. R. R.



FLOOR PLAN
 SCALE: 1/8" = 1'0"

COMBINATION STATION AT
 WELEETKA JCT. OKLA.