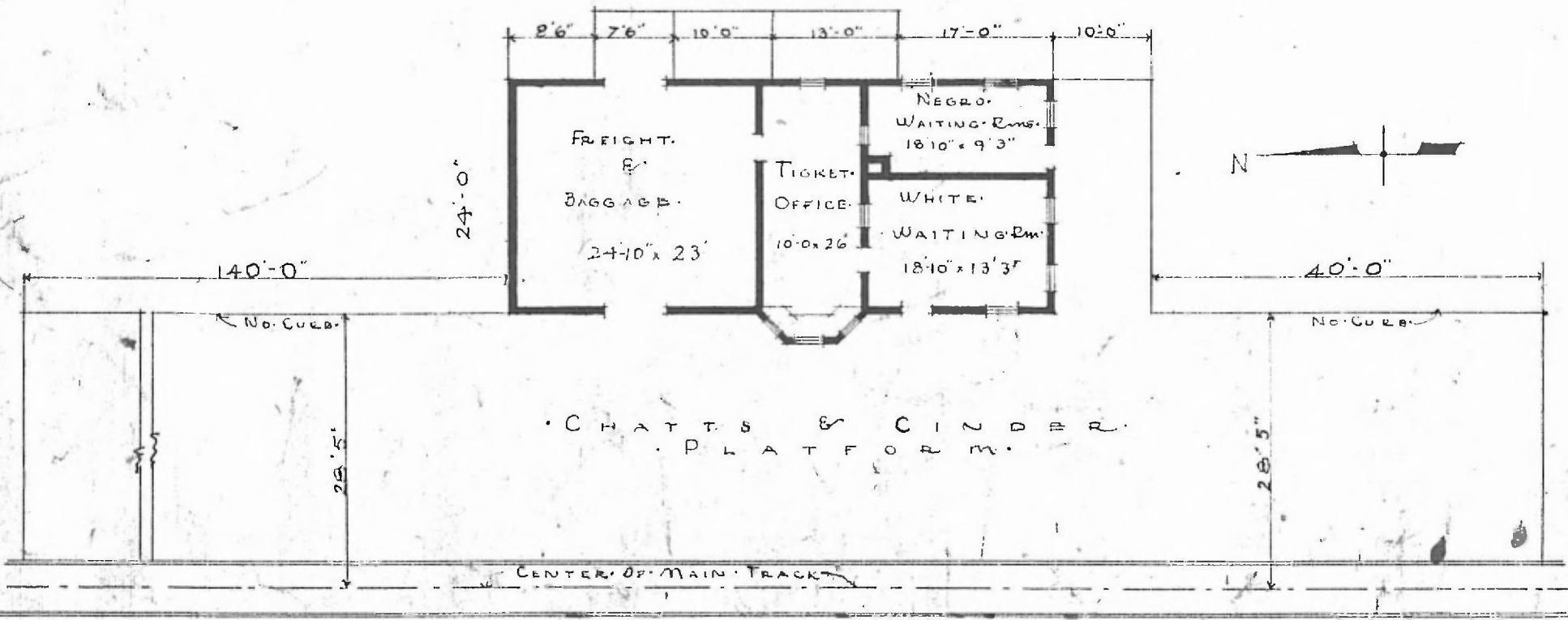


54

ERECTED: 1909.
 TYPE: FRAME.
 FOUNDATION: PILE HEADS.
 ROOF { TYPE: HIP SHINGLE.
 PITCH: APPROX. 13.
 WALLS: 2"6" STUD.
 HEATING: STOVES

FLOOR: 2 1/4" MAPLE.
 FINISH: { INSIDE: V JOINT CEILING.
 OUTSIDE: DROP SIDING.
 CEILING HEIGHT: 11'4" WAITING RMS.
 LIGHTING: OIL LAMPS.
 SANITARY FACILITIES OUTSIDE.

DIV. SOUTHWESTERN
 SUBDIV. CHEROKEE
 STA. No. 6425



FLOOR PLAN
 SCALE 1/4" = 1'-0"

PASSENGER STATION AT
 WEST TULSA, OKLA.

APRIL 4, 1916.