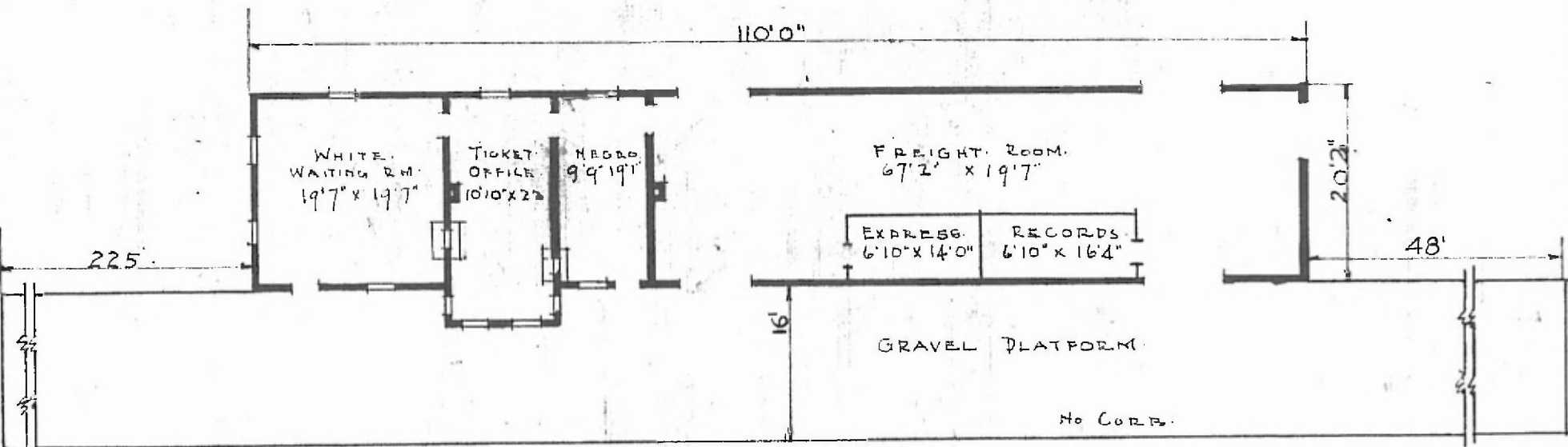


ERECTED 1900.  
 TYPE: FRAME.  
 FOUNDATION: PILE HEADS.  
 WALLS: 2x6"  
 ROOF { TYPE: GABLE SHINGLES.  
 PITCH 1/3.  
 HEATING: STOVES.

FLOOR: 3/4" Y. PINE.  
 FINISH { INSIDE: 3/4" BD. CEILING.  
 OUTSIDE: BOARDS & BATTS.  
 CEILING: HEIGHT: 12'0"  
 LIGHTING: ELEC. 2 WIRE 110A.C.  
 SANITARY FACILITIES: OUTSIDE TOILETS

S.W. DIV  
 Crule Sub  
 E Sol



FLOOR PLAN  
 SCALE 1/16" = 1'0"



COMBINATION STATION AT  
 WETUMKA - OKLA.

SEPT 24 1915.