

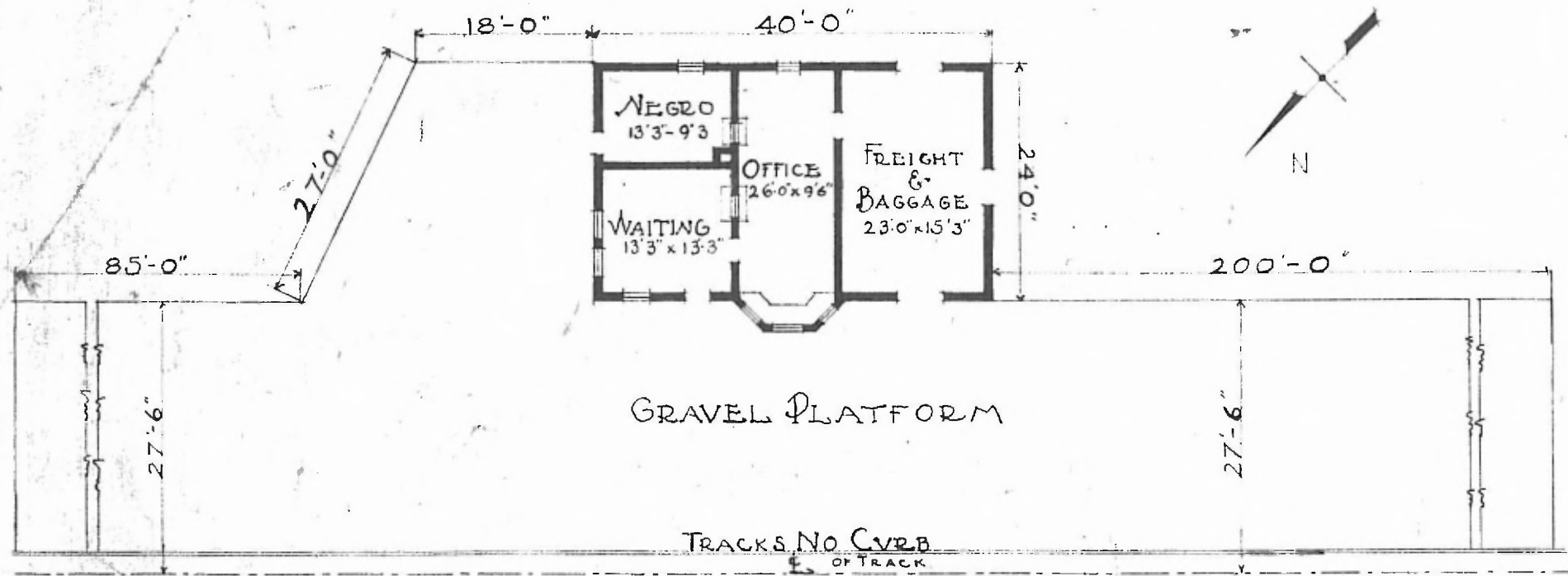
42

ERECTED TYPE
 FOUNDATION
 ROOF { TYPE
 PITCH
 WALLS
 HEATING

1910
 FRAME
 CONCRETE
 HIP SHINGLE
 1/3
 2x6
 STOVES

FLOOR FINISH { INSIDE
 OUTSIDE
 CEILING HEIGHT
 LIGHTING
 SANITARY FACILITIES

DIV. SOUTHWESTERN
 SUB. DIV. CHEROKEE
 STA. NO. 6387
 2 1/4 MAPLE
 V JOINT CEILING
 COVE SIDING
 12'-0"
 OIL LAMP
 OUTSIDE



PASSENGER STATION AT
 WHITE OAK OKLA.

FLOOR PLAN
 SCALE 1/4" = 1'-0"

JULY 27 1916.