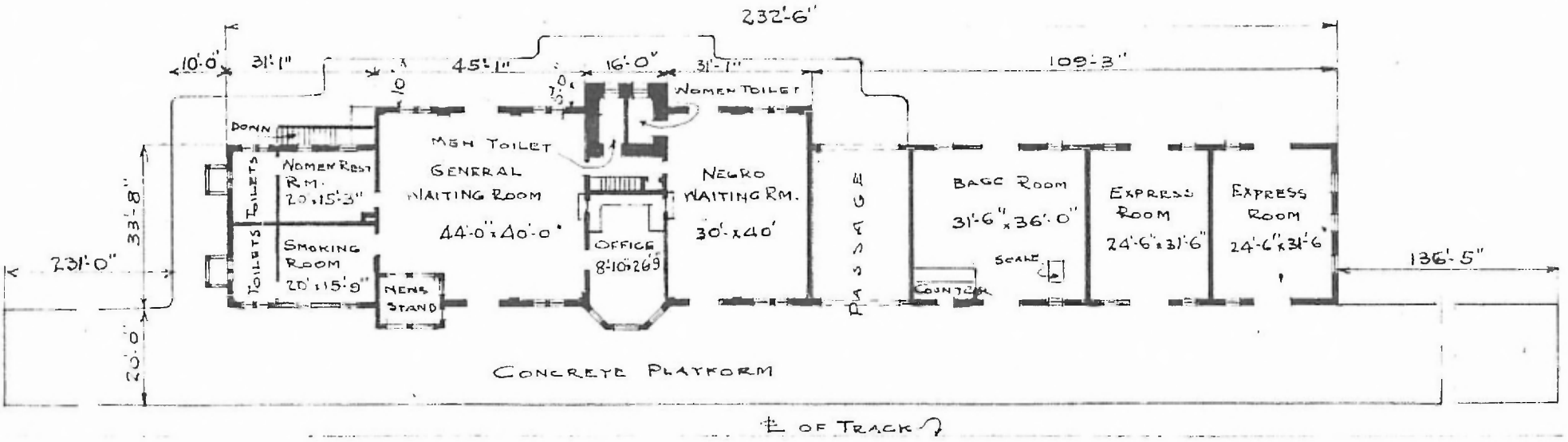


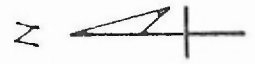
ERECTED 1910  
 TYPE BRICK  
 FOUNDATION CONCRETE  
 WALLS 13" BRICK  
 ROOF } TYPE HIP TILE  
 } PITCH  $\frac{1}{3}$   
 HEATING STEAM

FLOOR FINISH } INSIDE  
 } OUTSIDE  
 CEILING HEIGHT 13'-2" FIRST FLOOR; 12'-0" SECOND FR.; 10' BASEMENT.  
 LIGHTING ELECTRIC  
 SANITARY FACILITIES INSIDE TOILETS

St. 584  
 Sub Arthur  
 Div. Central (9)



1<sup>ST</sup> FLOOR PLAN  
 SCALE:  $\frac{1}{32}'' = 1'-0''$



COMBINATION STATION  
 PARIS, TEX.

JUN 14, 1910