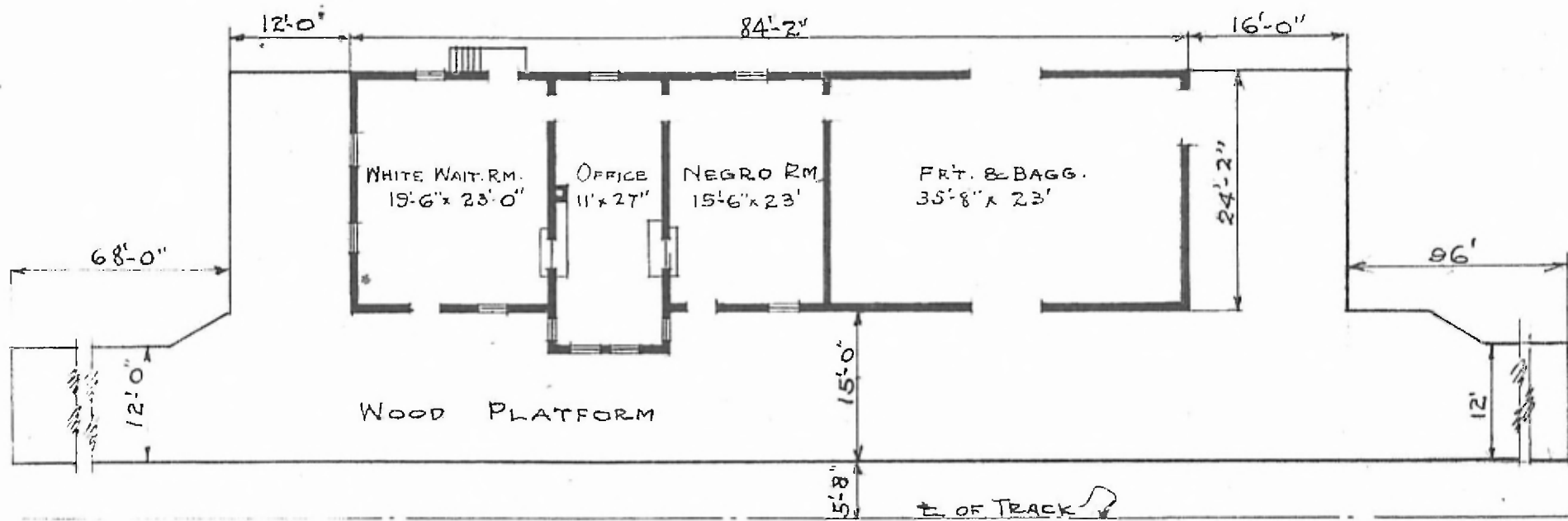


ERECTED 1902  
 TYPE FRAME  
 FOUNDATION PILE HEADS  
 WALLS 2x6  
 ROOF { TYPE GABLE-SHINGLES  
 PITCH  $\frac{1}{3}$   
 HEATING STOVES

FLOOR  
 FINISH { INSIDE  
 OUTSIDE  
 CEILING HEIGHT 14'-3"  
 LIGHTING OIL  
 SANITARY FACILITIES OUTSIDE TOILETS

$1\frac{1}{8} \times 3\frac{1}{4}$ " Y.P.  
 $1\frac{1}{8} \times 2\frac{1}{2}$ " M.&B.  
 B. & B. DROP SIDING

St. 680  
 Sub Ft. Worth  
 Div St. d., S. S. 7



FLOOR PLAN  
 SCALE:  $\frac{1}{16}$ " = 1'-0"

COMBINATION STATION  
 PROSPER, TEX.

FEB 16, 1920